

REBECCA RECOMMENDS

Inspirational destinations & properties of excellence

SUSTAINABLE INITIATIVES

SUSTAINABILITY & REBECCA RECOMMENDS

The Rebecca Recommends team is privileged to travel extensively and experience first-hand the positive impact of sustainable travel on countries where tourism is a key driver for economic growth. We are fortunate to work with several hotel clients who endeavor to improve the tourism experience, whilst enhancing the economic, social and environmental wellbeing of their communities.

Travel advisors have a unique opportunity to affect dramatic, positive change by influencing both business supply and traveler demand. Advisors and travelers alike increasingly seek to work with hotels that share their values of sustainable and responsible tourism.

In this educational sales brochure, we highlight our hotel's sustainability efforts to bring attention to the importance of their practices with the aim to have these efforts integrated into sales conversations.

By adding these sustainability projects to hotel sales, advisors can support the properties, add value to their client's experience, and start to spark traveler awareness of *traveling for good*.

REBECCA RECOMMENDS

Inspirational destinations & properties of excellence

HOTELS

Curtain Bluff . Antigua	pg 7-8
The Hari . London, UK	pg 9-10
The Torridon . Scotland, UK	pg. 11-12
Ashford Castle . Ireland	pg. 13-14
The Milestone Hotel & Residences . London, UK	pg. 15-16
The Egerton House Hotel . London, UK	pg. 17-18
Bushmans Kloof & Wilderness Reserve . South Africa	pg. 19-20
Xigera Safari Lodge . Botswana	pg. 21-22
Blanket Bay . New Zealand	pg. 23-24
Dwarika's Hotel & Dwarika's Resort . Nepal	pg. 25-26

SUSTAINABLE TOURISM

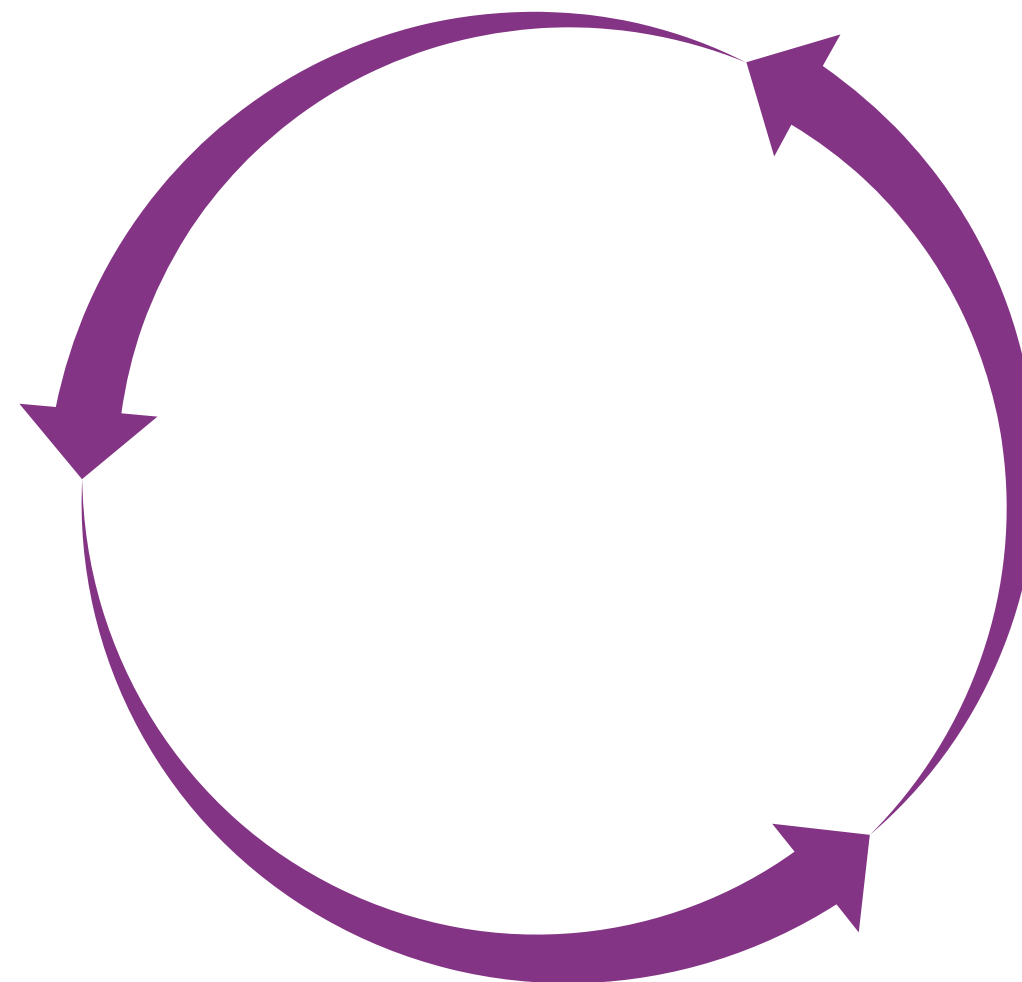
Sustainable tourism has a variety of definitions, but the overarching definition recognizes **positive support for 3 pillars: cultural heritage, the environment and local economy.**

CULTURAL HERITAGE

Respects and preserves the socio-cultural authenticity of host communities

ENVIROMENTAL

Conserves natural heritage and biodiversity



ECONOMIC

Ensures the economic benefits of tourism are fairly and equally distributed

SUSTAINABILITY KEY

Within each hotel spotlight, you will discover the property's sustainability initiatives and long-term goals represented by icons. There will also be a brief explanation of one specific sustainability project that encapsulates the story of the place or outlines an effort the hotel is most proud of.

Cultural Heritage

Respects and preserves the socio-cultural authenticity of host communities



Diversity & Inclusion



Cultural Preservation



Native Cuisine



Community Involvement

Environmental

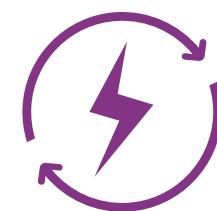
Conserves natural heritage and biodiversity



Water Conservation



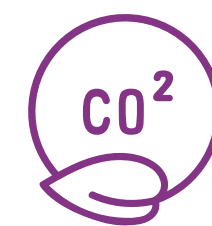
Waste Management



Energy Management



Responsible Sourcing



Carbon Reduction



Plastic Reduction

Economic

Ensures the economic benefits of tourism are fairly and equally distributed



Local Hires



Local Economic Support



Local Supply Chain



Local Artesians

SUSTAINABILITY ICONS

Sustainability is an ongoing effort that requires continuous attention, trial, and amendment in order to achieve lasting and positive impact. These icons represent efforts that support the short-and long-term sustainability goals of our hotel partners.

Diversity & Inclusion	The hotel promotes diversity and inclusion within the workforce.	Responsible Sourcing	The hotel prioritizes local, bulk, or fairtrade purchasing.
Cultural Preservation	The hotel takes actions towards preserving the local culture.	Carbon Reduction	The hotel strives to be carbon neutral by eliminating, reducing, or off-setting their carbon footprint.
Native Cuisine	The hotel serves cuisine native to its country.	Plastic Reduction	The hotel strives to be plastic-free by eliminating, reducing, or repurposing its plastic products.
Community Involvement	The hotel is involved in local community projects that support the needs of the local people.	Local Hires	The hotel prioritizes local hires.
Water Conservation	The hotel makes an effort to conserve, measure and/or monitor the water consumption.	Local Economic Support	Hotel revenue is donated to local projects, or the hotel's finances remain predominantly in the host country.
Waste Management	The hotel makes an effort to reduce, measure and/or monitor waste consumption.	Local Supply Chain	The hotel prioritizes local suppliers.
Energy Management	The hotel makes an effort to reduce, measure and/or monitor energy consumption.	Local Artisans	The hotel supports local artists or designers by showcasing or purchasing their work.

REBECCA RECOMMENDS

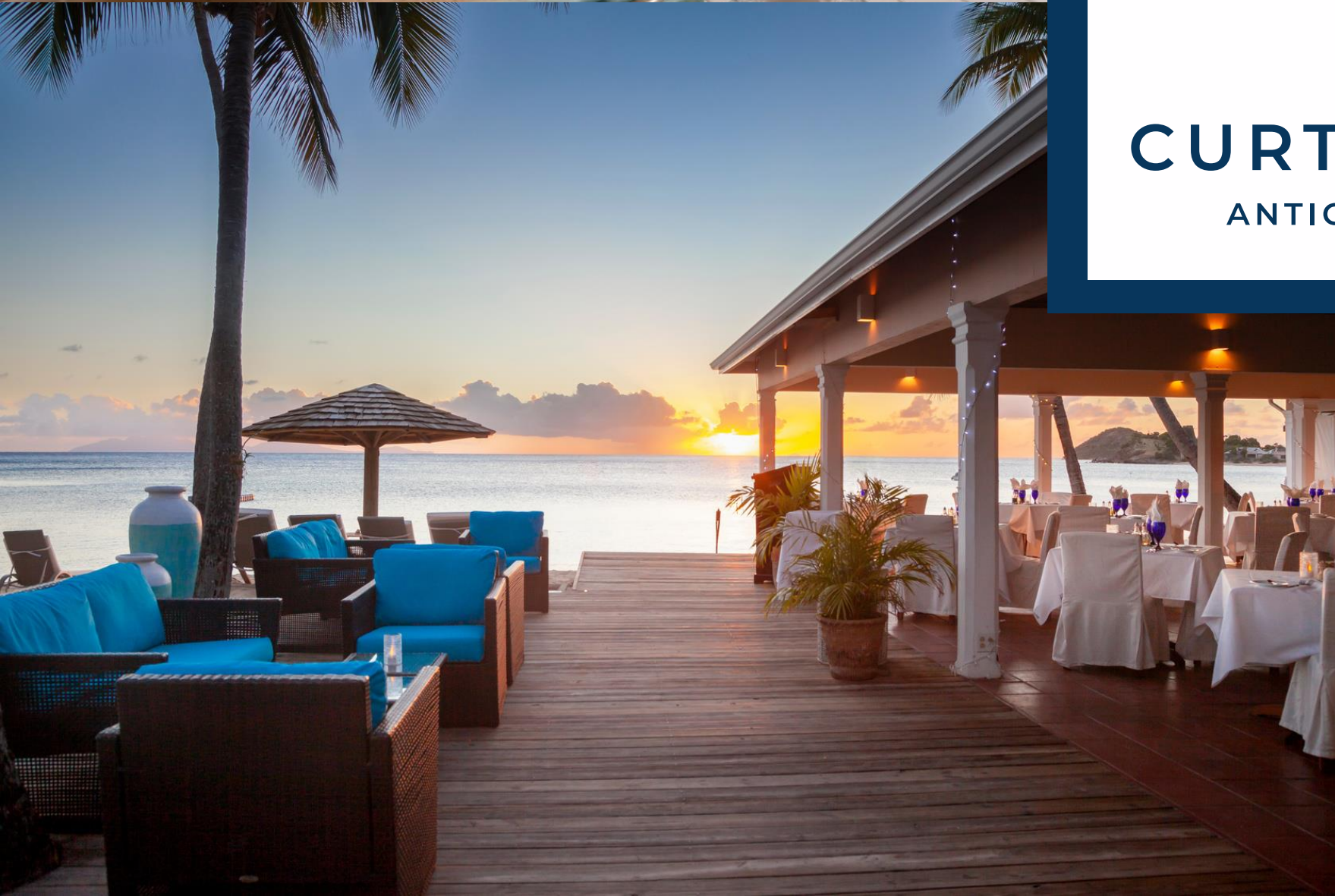
Inspirational destinations & properties of excellence

OUR PROPERTIES'

SUSTAINABLE INITIATIVES



CURTAIN BLUFF
ANTIGUA, WEST INDIES

The logo features a stylized 'CB' monogram inside a dark blue circle. Below it, the text 'CURTAIN BLUFF' is written in a bold, dark blue, sans-serif font, and 'ANTIGUA, WEST INDIES' is written in a smaller, dark blue, sans-serif font.

CURTAIN BLUFF

ANTIGUA, WEST INDIES

Sustainability Initiatives

Cultural Heritage



Environmental



Economic



Sustainability Spotlight: Old Road Fund

Community Involvement | Local Economic Support

The Old Road Fund is named in honor of the town of Old Road, where over 80% of the resort's staff are from. The fund dates back to 1974 and has grown to be one of the most successful private foundations in the Caribbean.

More than \$3 million have been invested in the following:

Education:

- Providing primary, secondary, and university education for 200+ students
- Supporting 36+ students in becoming USTA-accredited tennis professionals

Healthcare:

- Supporting Antigua's autism and drug and alcohol rehabilitation initiatives
- Providing eye surgeries, cancer treatments, and life-saving procedures

Community:

- Providing school supplies to children in welfare debt, churches, and sports teams
- Building a playground for the town's kindergarten class and sports courts for the primary school
- Supplying 40+ seniors with food and 100+ toys annually to the Christmas drive

How to donate: donations are offered to guests upon check-out; proceeds from the annual Old Road New Year Regatta; donating [online](#).



THE HARI



THE HARI

Sustainability Initiatives

Cultural Heritage



Environmental



Economic



Sustainability Spotlight: The Children's Trust

Community Involvement

The Hari has been wholeheartedly supporting The Children's Trust (the UK's leading charity for children with brain injuries) for 6 years and regularly works with the charity on a number of different initiatives including:

- Visiting the hospital dressed up in the children's favorite characters (10+ events to date)
- Reading stories
- Donating clothes
- Donating books and toys
- Staff fundraising
- Financial contributions (£4,000 in 2022 + £1 on every bill directly supports the charity's efforts)

The Hari's most recent activity was the 2022 Christmas Window Display in collaboration with famed artist, God's Own Junk Yard, which was produced using 90% recycled materials. The abundance of toys was collected from local charity shops and was donated to The Children's Trust at the end of 2022 as a Christmas surprise.



THE
TORRIDON



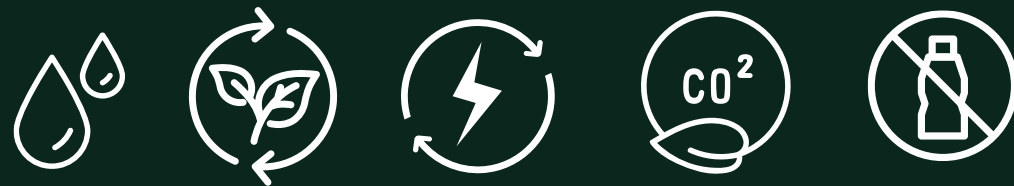
THE TORRIDON

Sustainability Initiatives

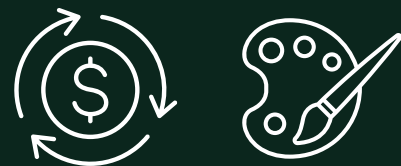
Cultural Heritage



Environmental



Economic



Sustainability Spotlight: The Kitchen Garden & Farm

Responsible Resourcing | Native Cuisine

There is nothing more local than ingredients sourced directly from the surrounding grounds and local estates. The Head Chef prioritizes sustainability by focusing on reducing supplier emissions through partnerships with local food suppliers.

More about The Torridon's 2.5-acre Victorian Kitchen Garden:

- The garden offers a superb crop of berry fruits from gooseberries to raspberries, seasonal vegetables, and a great selection of herbs that are used in both our restaurants throughout the year.
- A biomass boiler provides heating and hot water, and the ash by-product is used to nourish the soil in the garden. Borehole water supplies all water on site and reduces single-use plastic with reusable glass bottles.
- Many of the flowers seen in the house are grown in the garden, and all food waste from the resort is composted in our state-of-the-art Rocket composter to provide nutrient-rich soil for the garden.

The Farm

- The hotel raises Highland cattle, chickens, and pigs. The cattle and pigs are reared for their meat, which is served on the property.



ASHFORD CASTLE

HOTEL & COUNTRY ESTATE
EXCELLENCE SINCE 1928



ASHFORD CASTLE

Sustainability Initiatives

Cultural Heritage



Environmental



Economic



Sustainability Spotlight: Immersive Experiences

Cultural Preservation

Ashford Castle hosts MAKE TRAVEL MATTER® Experiences, with the aim of immersing and educating guests in local culture and preserving native craft and tradition.

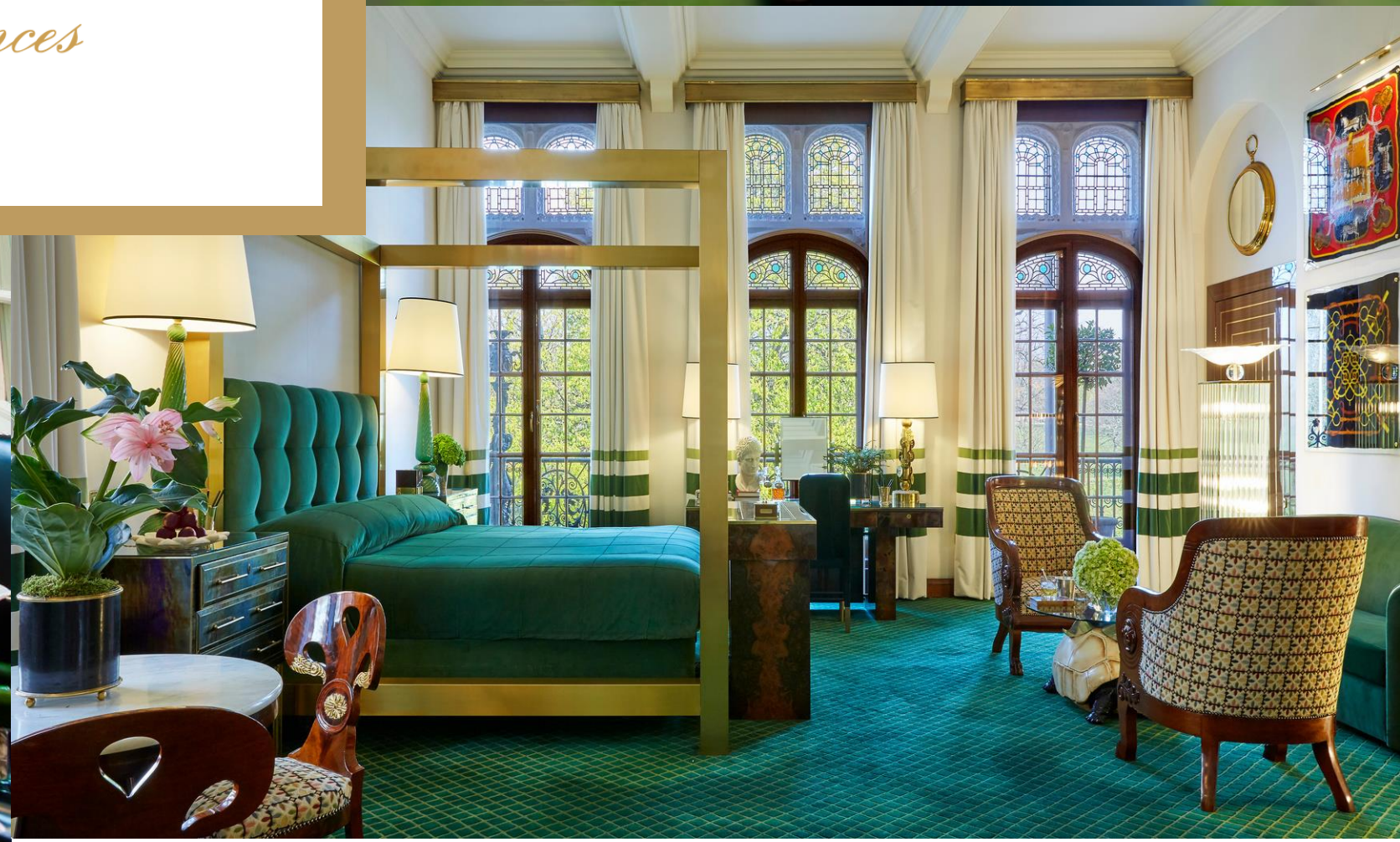
"Meet the Makers" Experiences

The experiences offer a range of itineraries centered around meeting, supporting, and learning from the flagbearers of traditional Irish culture.

- Fire & Wood: The experience is a journey through the ancient art of blacksmithing and furniture making.
- Clay & Cloth: The experience explores the country's rich tradition of textile design and ceramics.
- Taste of The West: The two experiences introduce the people at the forefront of Irish artisan food culture in the West of Ireland.
 - Ireland's land of milk & honey takes guests on a journey through sky, sea, and land with a full day meeting a local beekeeper, seashore forager, and distiller.
 - Ireland's bounty of hills & fields, starts with a hands-on tutorial on how to make traditional Irish soda bread, followed by an afternoon with a cheesemaker before finishing the day with a local chocolatier.



*The Milestone Hotel
& Residences*



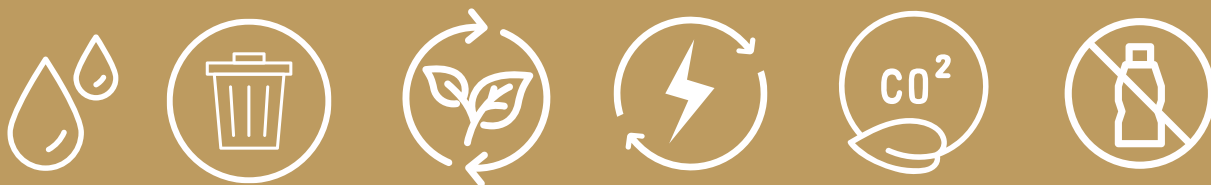
The Milestone Hotel & Residences

Sustainability Initiatives

Cultural Heritage



Environmental



Economic



Sustainability Spotlight: Immersive Experience

Cultural Preservation

The Milestone Hotel hosts MAKE TRAVEL MATTER® Experiences, with the aim of immersing and educating guests in local culture and preserving native craft and tradition.

The Art of Foraging

Foraging allows people to learn more about the local environment, reconnect to the surroundings and take the time to truly understand and appreciate seasonal food, all whilst leaving a minimal impact on the land.

- Travel to a foraging location to discover what exciting wild foods are growing nearby.
- Learn about edible species, tips on harvesting, correct identification and possible look-alikes.
- Sample wild food creations from pickles to jams, chutneys, syrups, flavored salts, alcohol infusions, and much more.
- Once back at the hotel, the Chef and his team create a personalized dinner menu, and cocktails, using the produce gathered during the foraging experience.



THE
EGERTON HOUSE
HOTEL



THE EGERTON HOUSE HOTEL

Sustainability Initiatives

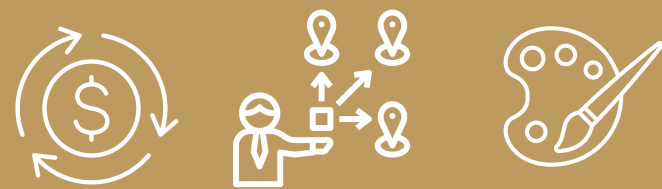
Cultural Heritage



Environmental



Economic



Sustainability Spotlight: Immersive Experience

Cultural Preservation

The Egerton House Hotel hosts MAKE TRAVEL MATTER® Experiences, with the aim of immersing and educating guests in local culture and preserving native craft and tradition.

Growing Underground Experience

The Egerton is proud to share their partnership with Growing Underground.

Thirty meters below the bustling streets of Clapham lies a hydroponic farm

- Microgreens and salad leaves grown year round
- The environment is pesticide-free
- The farm is run on 100% renewable energy

Guests are invited to tour the farm, which can only be entered through old railway tunnels that were converted into air raid shelters during the Second World War. Guests will return to the hotel with fresh leaves that the chef will incorporate into their supper.



BUSHMANS KLOOF

WILDERNESS RESERVE & WELLNESS RETREAT



BUSHMANS KLOOF

WILDERNESS RESERVE & WELLNESS RETREAT

Sustainability Initiatives

Cultural Heritage



Environmental



Economic



Sustainability Spotlight: Rock Art Excursions

Cultural Preservation

Bushmans Kloof hosts MAKE TRAVEL MATTER® Experiences, with the aim of immersing and educating guests in local culture and preserving native craft and tradition. The lodge recognizes the immeasurable value ancient paintings in the area that preserve the nation's cultural landscape. Guests can discover the remarkable collection of ancient rock art sites, some of which are 10,000 years old, on daily excursions led by knowledgeable field guides.

- Proclaimed as a South African National Heritage Site, Bushmans Kloof protects more than 130 unique rock art sites across the 7500-hectare reserve.
- More than 130 have been identified across the reserve.
- The San rock art of the Cederberg offers a fascinating glimpse into both the daily life and cultural traditions of this ancient nomadic people. Typically painted in sheltered overhangs, these intricate paintings are a vibrant record of this stone-age culture.
- The artists used ground ochre, animal blood and plant extracts to create their paint, with the passage of time evident in the fading of each pigment.




XIGERA
SAFARI LODGE ~ BOTSWANA



XIGERA

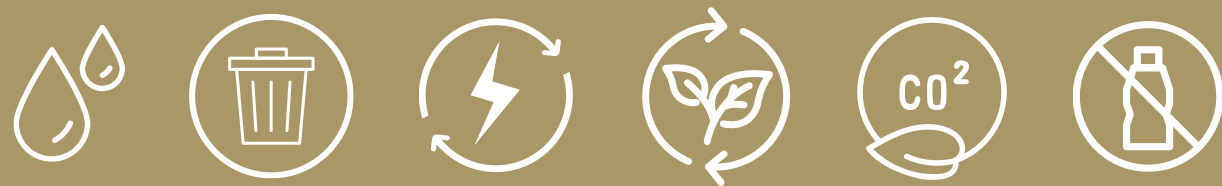
SAFARI LODGE ~ BOTSWANA

Sustainability Initiatives

Cultural Heritage



Environmental



Economic



Sustainability Spotlight: Lodge Design

Cultural Preservation | Local Artisans | Responsible Resourcing

Xigera Safari Lodge hosts its very own Design Collection celebrating the people of the continent and the local host communities. Guests have the opportunity to join the General Manager for a tour of the lodge to explore the impressive art collection. This tour provides a fascinating insight into the lives and work of these eminent artists and craftspeople.

- The art is conceptualized by Toni Tollman, Philip Fourie and Anton de Kock – in collaboration with award-winning South African gallery Southern Guild.
- Tours include an insightful and informative journey around the Lodge, taking in the key pieces that are showcased in our beautiful public spaces, from the Bar to the Boma, and from the Library to the Dining Room.
- Discover the background stories behind Xigera's living art gallery, highlighting the African creativity and craftsmanship of the bespoke works commissioned exclusively for the lodge from some of Africa's most exciting artists and artisans.
- Unique and collectible, every item has been hand-made by some of the most recognizable names in African art.



B L A N K E T B A Y



BLANKET BAY

Sustainability Initiatives

Cultural Heritage



Environmental



Economic



Sustainability Spotlight: Lodge Design

Community Involvement | Local Economic Support | Local Hires

Glenorchy, the home of Blanket Bay, is a small town with just 350 residents. Blanket Bay uniquely contributes to the local community through its long-standing relationships with Glenorchy School, local community organizations, and the regional polytechnic. From hiring locally, supplying locally, and spearheading educational improvements, Blanket Bay is a vital contributor to the growth of the town.

- Blanket Bay employs over 50% of the local population making it the largest single employer. The wider benefits to the area are far-reaching as many children from staff families have enjoyed Blanket Bay as their first employer.
- Several staff members have been with the property since it opened some 25 years ago and herald from families who have resided locally since the area was settled helping forge a close connection between the Lodge and the community.
- The lodge has a long-standing relationship with Glenorchy School. Currently, they have taken on the enormous task of renewing the community swimming pool which serves not only the lodge's local school but also the wider Glenorchy community.
- Local stores benefit from the travelers the lodge introduces to the area in addition to the staff who frequent the stores for lodge supplies.



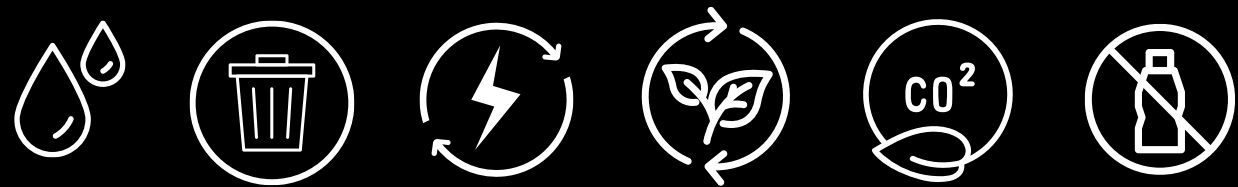
Dwarika's Hotel

Sustainability Initiatives

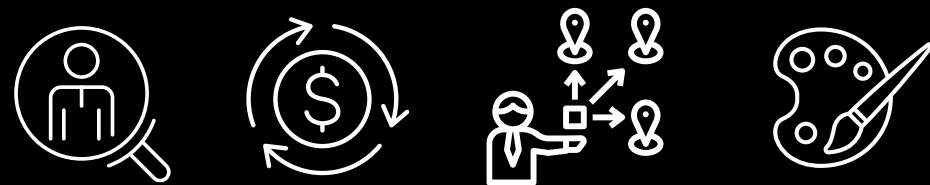
Cultural Heritage



Environmental



Economic



Sustainability Spotlight: Craftsmanship Restoration

Cultural Preservation

Built as an ode to the traditional Newari craftsmanship, Dwarika's Hotel is a living museum embedded with intricate wood carvings and striking brickwork.

The origin of the hotel has a unique story, initiated by the visionary founder Mr. Dwarika Das Shrestha. In the 1950s, Mr. Shrestha stumbled upon two carpenters sawing off the carvings of an old wooden pillar to use as firewood. The sight of his heritage burning into ashes sparked a fire in him to act and led him to purchase the wooden pillar. Since then, Dwarika's Hotel has continued the legacy of preserving the flourishing cultures of the past.

- With three master carvers, Mr. Shrestha started a Heritage and Training Workshop that would restore the woodwork in his collection. At the time demand for such carved work was non-existent and that threatened the survival of the entire art form. Eventually, this workshop became the center point of the renaissance of traditional wood carving in the Kathmandu Valley.
- For its pioneering work in preserving Kathmandu's heritage, the hotel has also won PATA Heritage Award and INTACH-SATTE Award.
- The architectural grandeur of the hotel has become a remarkable example and trendsetter in the hotel industry for sustainable heritage conservation, preservation, and revival.